



# GED® Testing News for 2010—2011

## Empowerment—for Employment, for Life, for the Future

**Empowerment** means that you can make choices and decisions to improve your life.

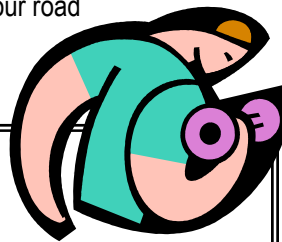
**Empowerment** means that you can continually learn.

**Empowerment** means that you have access to the tools to achieve your goals such as education, good health, and a job that provides the income and resources you need for your family.

**Empowerment** means that you can go to college, enter the military, choose your career, become a role model.

**Empowerment** means that you have the power you need because you are doing the work.

**Develop your own POWER NOW** — Take the GED and start along your road to achievement.



Each test session is in 2 parts; attend **both** to complete.

### Schedule

**Practice GED — \$25 Cash**  
Passing Pre-test scores required before registering for Official GED.

**Note various times.**

- Aug. 23 & 24, **8:00 AM.**
- Sept. 13 & 14, 5:30 PM.
- Oct. 4 & 5, 5:30 PM.
- Nov. 1 & 2, 5:30 PM.
- Dec. 6 & 7, 5:30 PM.
- Jan. 3 & 4, 5:30 PM.
- Feb. 7 & 8, 5:30 PM.
- Mar. 7 & 8, 5:30 PM.
- Apr. 4 & 5, 5:30 PM.
- May 2 & 3, 5:30 PM.
- June 6 & 7, **8:00 AM.**

**Official GED — \$65 Cash**

- Sept. 20 & 22, 8:00 AM.
- Oct. 18 & 20, 8:00 AM.
- Nov. 13 & 20, 8:00 AM★  
★ **2 Saturdays—attend both.**
- Dec. 13 & 15, **5:00 PM.**
- Jan. 24 & 26, 8:00 AM.
- Feb. 14 & 16, 8:00 AM.
- Mar. 28 & 30, 8:00 AM.
- Apr. 25 & 27, 8:00 AM.
- May 23 & 25, **5:00 PM.**
- June 20 & 22, 8:00 AM.

### Are You Ready?

Request a free assessment of your Reading, Math, & Writing skills.

Call Katie Delaney at (603)357-9041 to schedule appointment for this free, 1½ hour assessment.

After this test, you'll get immediate feedback and GED Prep advice.

### Free GED Preparation

- **Pre-GED Prep Classes** at Keene High School, Mondays (Language Arts) & Thursdays (Math), 6 to 8 PM.
- Adult Learner Services **GED Prep Tutorial Classes** in or near your community, days & evenings.

**Accommodations** may be available for specific documented disabilities, including learning disabilities. Information about GED Accommodations is available at the Community Education office.

Call **Katie Delaney, at (603)357-9041** to discuss free GED Prep classes or Accommodations for Disabilities.

## What are the GED tests? How is the GED scored?

There are 5 parts to both the Practice GED and the Official GED Test Battery:

1. Math
2. Language Arts-Writing
3. Science
4. Social Studies
5. Language Arts-Reading.

Each test is scored separately.

EACH OFFICIAL GED TEST MAY BE TAKEN 1-AT-A-TIME, over a period of one year from registration. Passing scores will be maintained, but a re-registration fee will be required after one year in order to continue.

To pass the GED: A minimum score of 410 is required for any

individual test, and a total point accumulation of 2,250 and an average of 450 for all 5 tests are requirements for passing. A "perfect" score (no errors) for each test is 800.

In the State of New Hampshire, passing scores for any individual tests may be kept until the next GED publication date, but rules may be different in other states.

## To Register:

**Pre-register** in person at Keene Community Education, 171 West Street, Keene, NH 03431.

Registration hours:

Mon-Thurs; 7:30 AM to 3:30 PM or by appointment.

- **REGISTRATIONS WILL NOT BE TAKEN WITHOUT CASH PAYMENT.**
- **TO REGISTER FOR OFFICIAL GED, BRING NEW HAMPSHIRE PHOTO ID.**

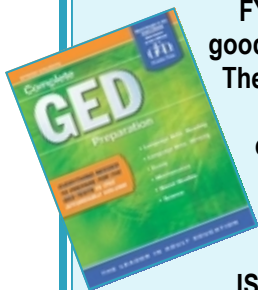


Official GED® Testing Center

Katie Delaney—GED Chief Examiner  
Email: [kdelaney@sau29.org](mailto:kdelaney@sau29.org)  
171 West Street  
Keene, New Hampshire 03431

Phone: (603) 357-0088  
Fax: (603) 357-9070

[www.keenecommunityed.org](http://www.keenecommunityed.org)



FYI: There are many good GED prep books. The study guide used by many NH adult education centers:

**Complete GED Preparation**

Pub: Steck-Vaughn  
ISBN: 1-4190-5399-X

Also — a good GED preparation website:  
[www.gedprepinfo.com/](http://www.gedprepinfo.com/)

**Results** — Your results and one free *unofficial* transcript are mailed from Keene Community Education within two weeks after testing. We do not give test results over the phone. *Official* transcripts for college or employment may be requested in writing with a \$5 transcript fee. Request forms are available at our office or [website](#). *Official* transcripts are mailed directly to a requesting institution.

New Hampshire GED Certificates for candidates who have passed the entire GED Test Battery are processed and mailed from the NH GED Administrator's office in Concord, usually within a month after testing.

**What if...**

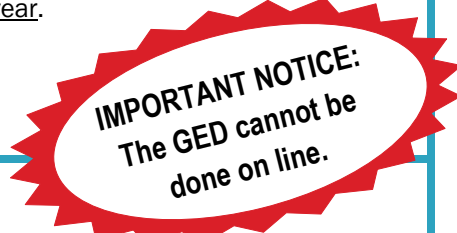
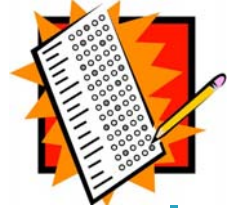
*...I don't pass one of the tests?* Just take a retest— Cost is \$15, but it would be wise to do more preparation first (each Practice retest is \$15).

*...I don't have enough points even if all are over 410?* Choose one or two tests with a low score that can be improved to retest—\$15 per test — **PREPARE FIRST!**

*...I passed the GED but need higher scores to get into my chosen college?* You can ask for a letter from that college stating that you must achieve a higher score in any specific GED test; then the GED Chief Examiner will allow you to take a retest or multiple retests.

*...I've already taken 2 re-tests?* You may take any one of the individual GED tests a maximum of three times within any one calendar year.

**Be well-prepared before a retest.**



**The lowdown on the GED® — What it's really like.**

Official GED tests are done in two four-hour sessions at the Community Education GED Testing Center.

Time limits are as follows:

1. Math—90 minutes:  
Part I with calculator (45 Min.)  
Part II without calculator (45 min.)
2. Language Arts-Writing—2 hours:  
Multiple choice (75 minutes)  
Hand-written essay (45 minutes)
3. Science—80 minutes.
4. Social Studies—70 minutes.
5. Language Arts-Reading—65 min.

Time limits given are maximum time available, but some test-takers may finish earlier.

Accommodations may be available for people with documented disabilities and "adaptations" (unmarked straight-edge, Post-it Notes, colored overlay & marker, magnifier, ear plugs, etc.) may be available to anyone—**BE SURE TO ASK.**

GED test-takers may choose to take one test per session. Inquire about accommodations or adaptations, and decide before pre-registering.

The GED is weighted more heavily upon reading comprehension than upon knowing facts, dates, places, etc. Especially for the Science and Social Studies tests, a written statement, map, graph or other illustration may be given, and questions depend on understanding, some basic knowledge, and the ability to draw conclusions or inferences.

The math test requires arithmetic skills, basic geometry and algebra, estimates, distance, percentages, fractions and coordinates.

The Language Arts-Writing test has 2 parts. The multiple choice part requires knowledge about the mechanics of writing; spelling, punctuation, capitalization, sentence and paragraph structure. The hand-written essay part must respond to the topic and instructions given, must demonstrate an ability to communicate clearly in writing, and may be from one to two pages in length.

The Language Arts-Reading test is an assessment of understanding and interpreting literature; fiction, non-fiction, poetry, plays and business documents.

Materials for testing will be provided including test booklets, computer-scan score sheets, scratch sheets, pens, pencils, erasers and calculators, and all must be collected, examined and counted. No personal items may be brought to the testing area and cell phones and PDAs **MUST** be OFF and held by the GED Examiner. No food or beverages are allowed except for a labeled, unopened bottle of clear, plain water.

Prepare, then relax. You've done the work — now, use your **power**.

